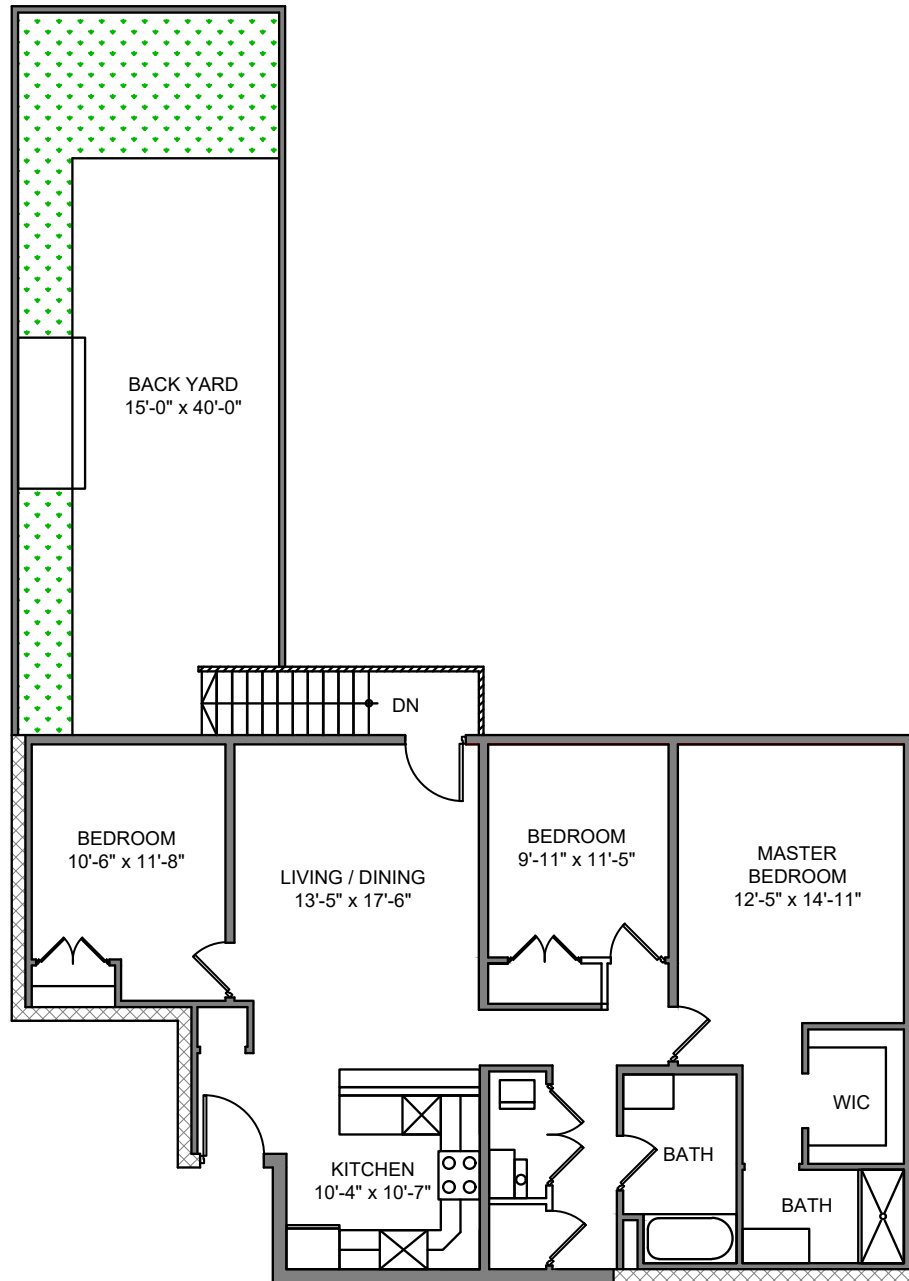


THE
MOOREFIELD
GROUP



Construction

- 5' white oak hardwood floors over Gypcrete
- Double insulated noise reducing windows
- High-efficiency HVAC
- Recessed LED lighting
- Comelit multi-tenant VIP intercom system
- Wired for internet, cable, Fios & security systems

Appliances

- Bosch Kitchen Appliances
- Under cabinet wine cooler
- Front Loading Washer/Dryer

Interior

- Quartz waterfall countertop
- Spanish porcelain tile
- Deep soaking tub
- Toto toilets
- Rain-shower/body sprays with frameless glass doors
- Under mount steel sink
- California closet systems
- Custom blackout shades

Exterior

- 600 sq. ft. backyard
- outdoor grill
- direct access from the unit

111 MONROE ST. #202
HOBOKEN

kw CITY LIFE JC
KELLERWILLIAMS, REALTY

190 CHRISTOPHER COLUMBUS DRIVE, JERSEY CITY, NJ 07302